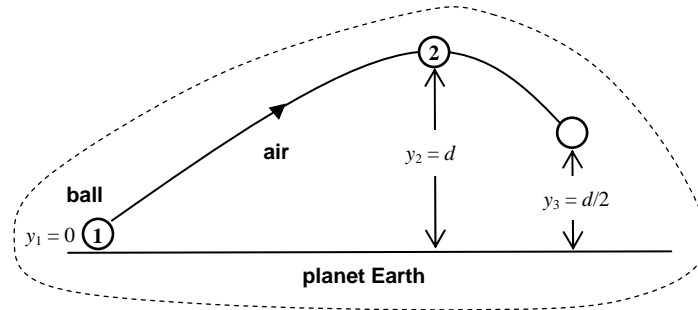


Ex 11 Energy of a soccer ball in flight

Names



Initial energy of system at point 1

+

work done on system

=

energy of system at point 2

=

energy of system at point 3

$$K_1 + U_{g1} + U_{s1} + W$$

$$= K_2 + U_{g2} + U_{s2} + \Delta U_{int 2}$$

$$= K_3 + U_{g3} + U_{s3} + \Delta U_{int 3}$$

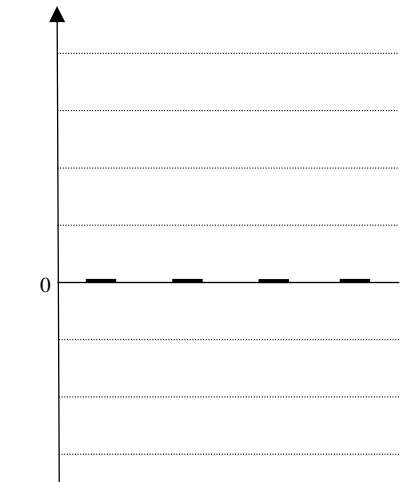
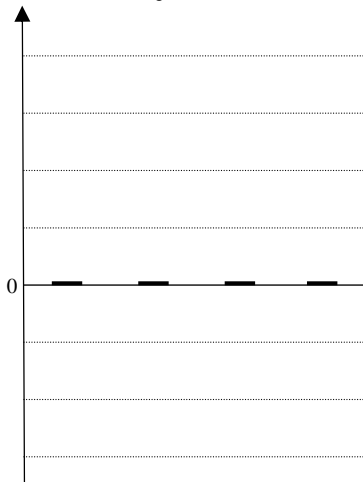
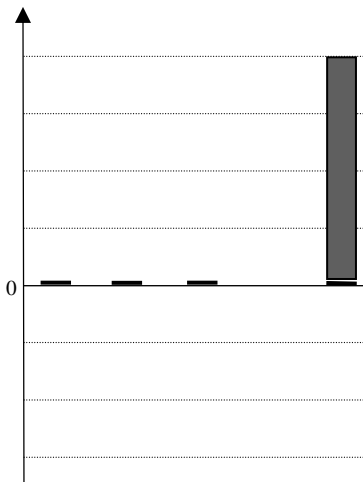


Fig. 1

Fig. 2

Fig. 3